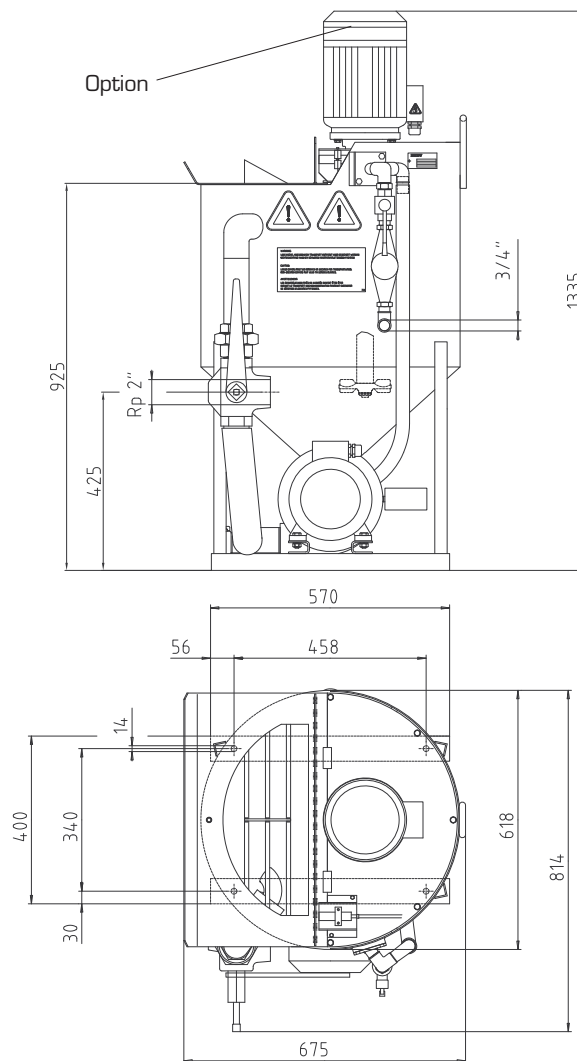


Data sheet

HCM 100



Mixing Pump	TMP	9
Production approx (w/c = 1)	m ³ /h	2
Circulation capacity	l/min	540
Usable content	l	100
Max. particle size	mm	5
Electric motor	50 Hz kW	3
	60 Hz kW	3.6
Water connection	BSP	3/4"
Weight	kg	130



Hány AG reserves the right to make improvements and modifications to their equipment without notice.

GROUTING SYSTEMS



HIGH-SHEAR MIXER HCM 100

The HCM 100 high shear colloidal mixer is designed to mix water with cement, ultra-fine cement, bentonite, sand and additives. The mixer consists of a mixing tank and a high-speed mixing pump. The special mixing effect is achieved by an extremely high turbulence created in the pump casing. This turbulence with its high shear forces separates the cement or bentonite particles which results in a fully hydrated suspension. For the mixing of suspensions with low water/cement ratios or mortar, an additional mixing unit (option) can be installed in the mixing tank to guarantee efficient pre-wetting of the dry admixtures.

A tank of fabricated steel together with a selection of highly wear-resistant materials guarantee for long trouble-free operation of the mixer. The shaft seals of the mixing pump are permanently lubricated by an automatic grease cartridge. The mixer is simple to operate and very easy to clean.

ACCESSORIES:

MIXER COVER

oversized for 50 kg bags

WATER METER ¾"

for exact water dosing (manual shut-off)

AUXILIARY MIXING UNIT for high-shear mixer HCM 100,
3 kW, 400 V, 50 Hz, (4.8 kW, 460 V, 60 Hz)

GROUTING SYSTEMS

HÄNY

